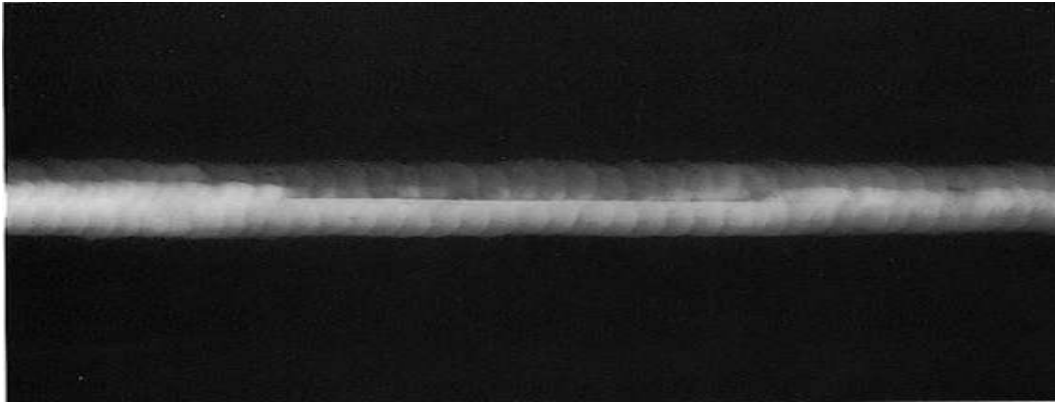
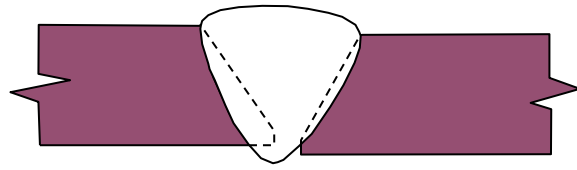
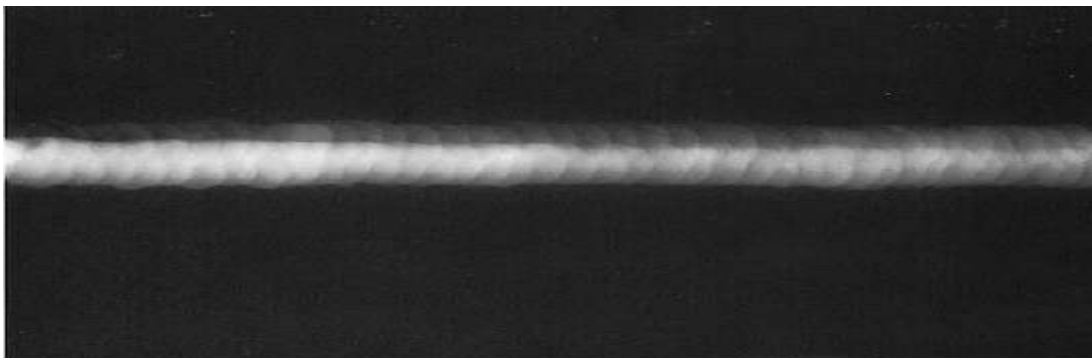
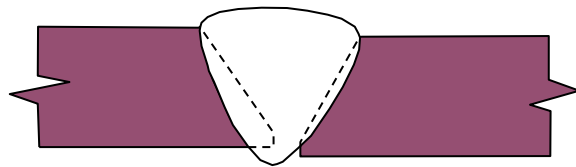


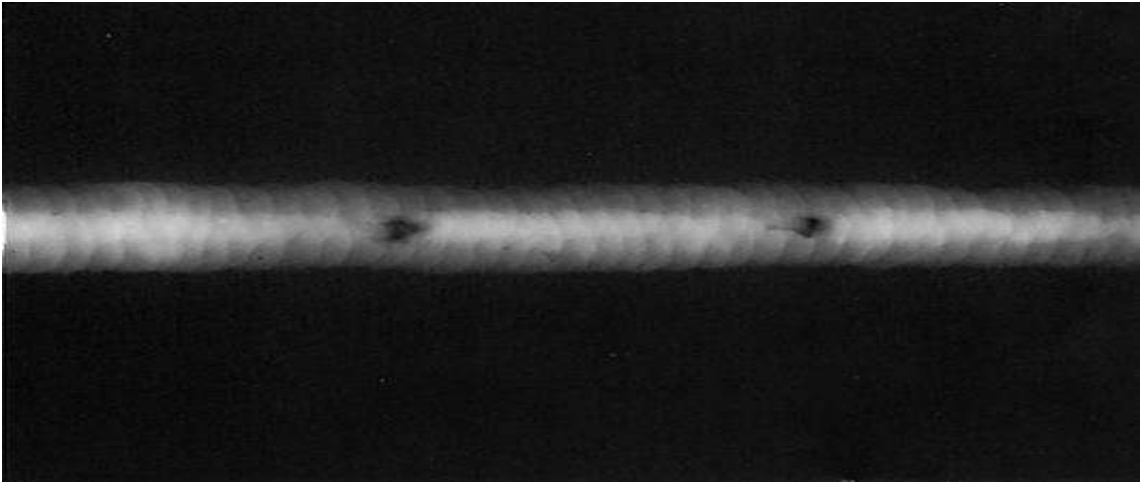
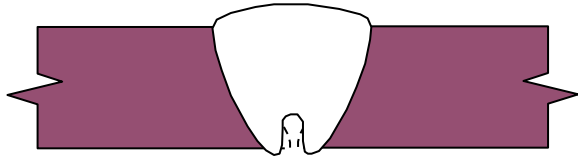
Misalignment/Lack of root fusion



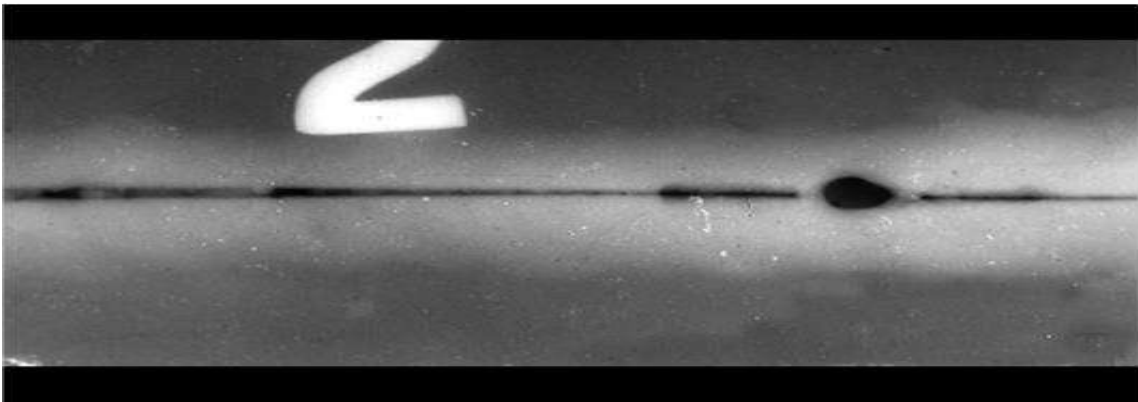
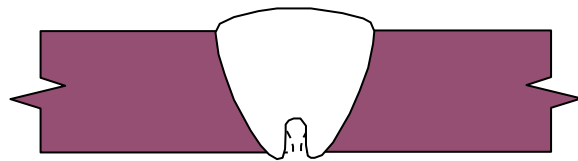
Misalignment



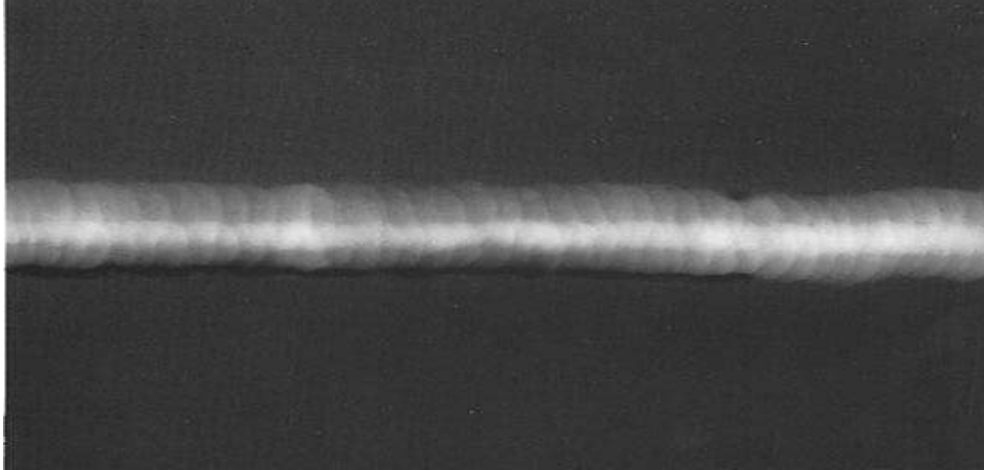
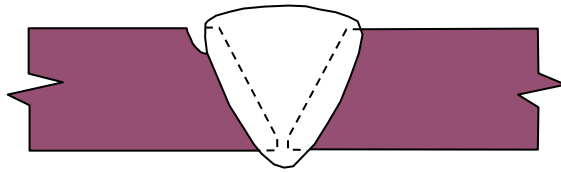
Burn through



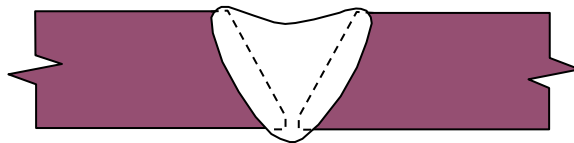
Burn through + LORP



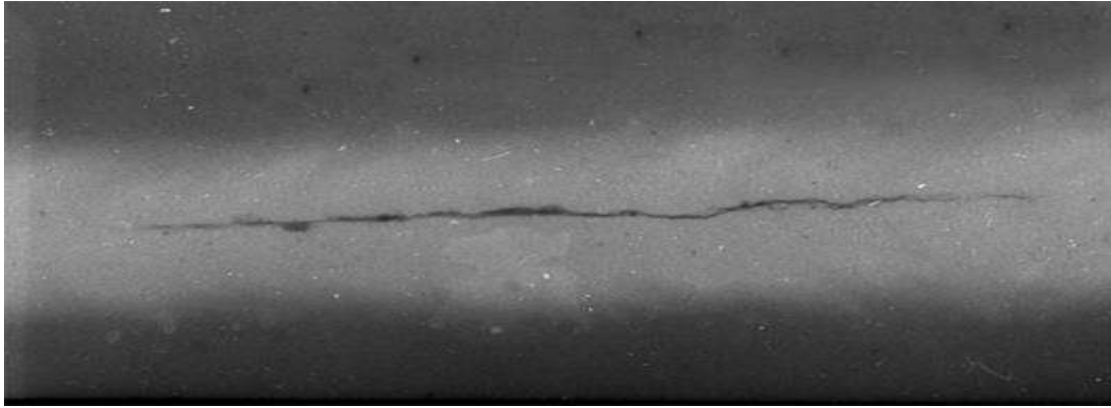
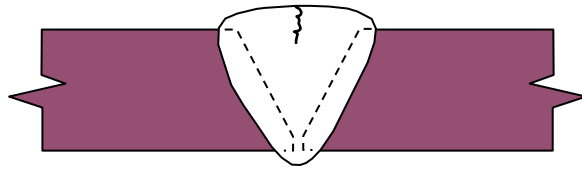
Cap undercut



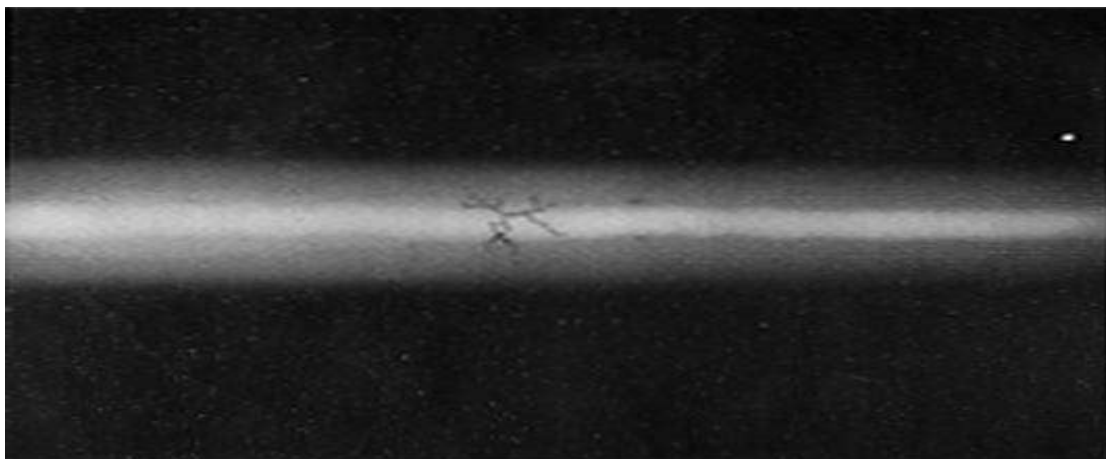
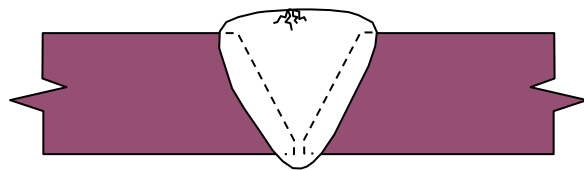
Burn through + LORP



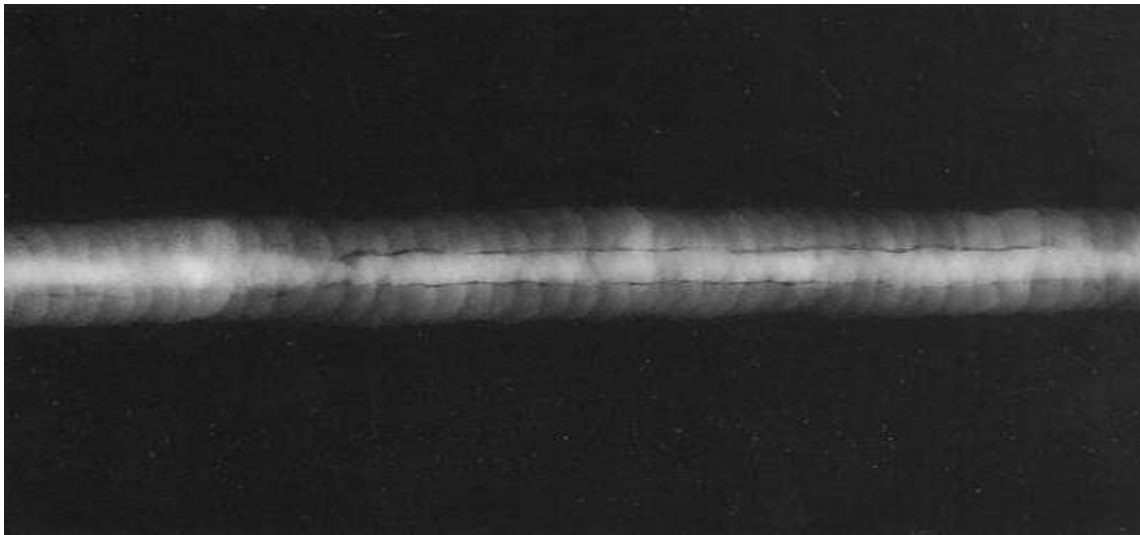
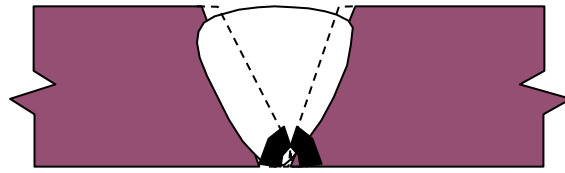
Longitudinal crack



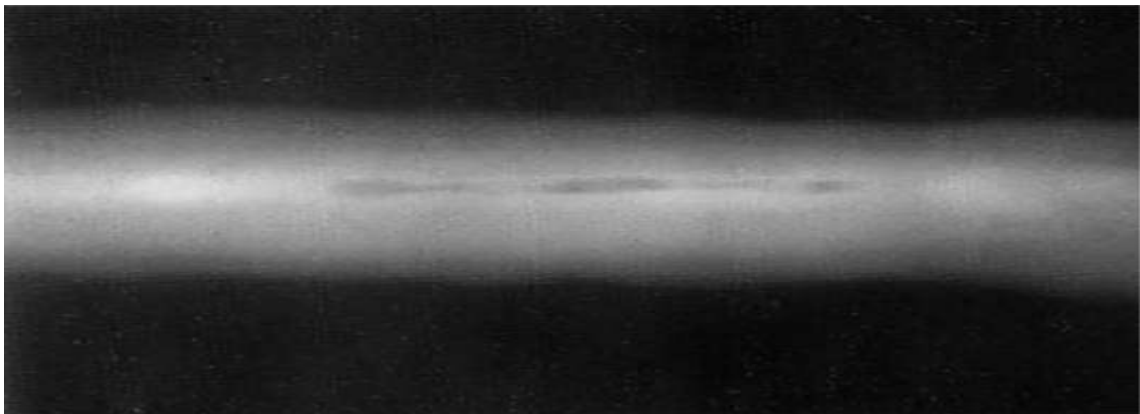
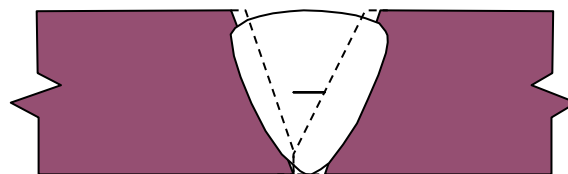
Star crack



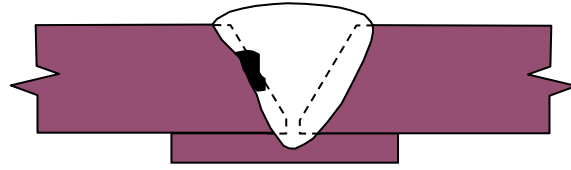
Elongated slag lines



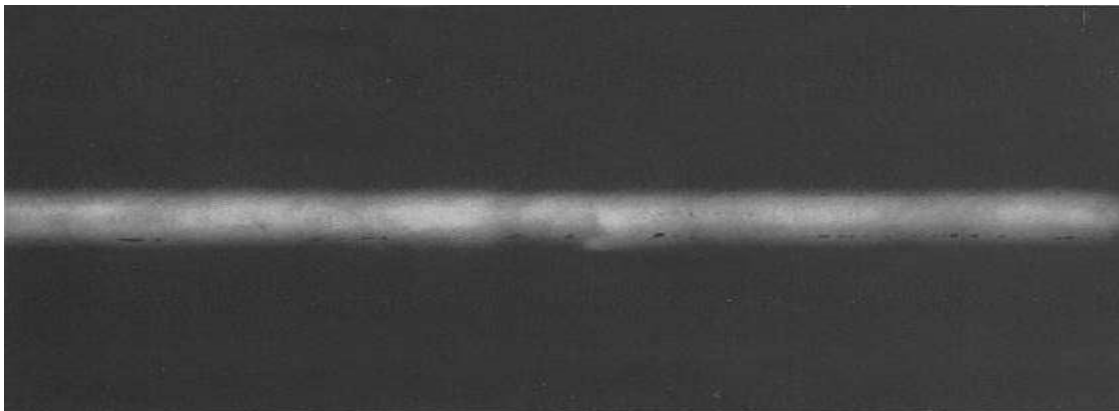
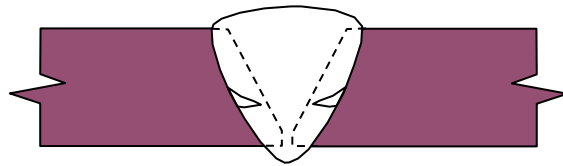
Slag inclusion



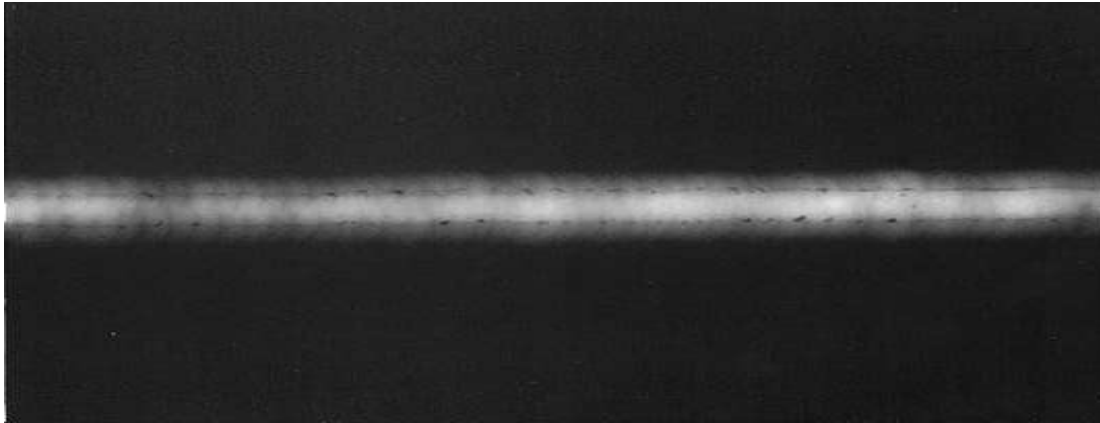
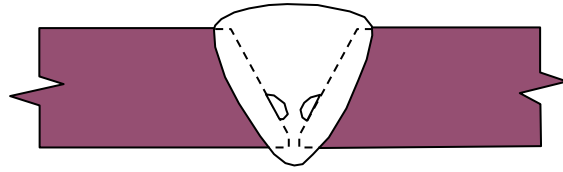
Lack of side wall fusion with slag



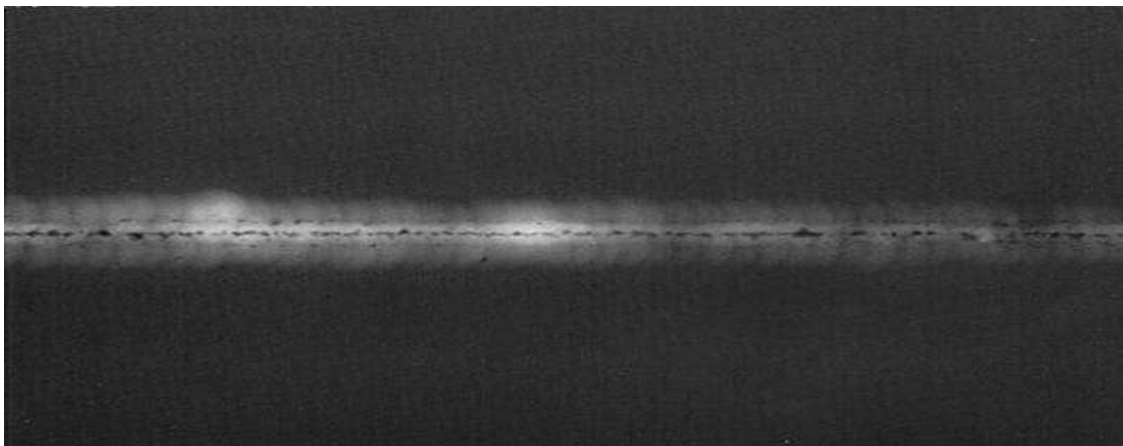
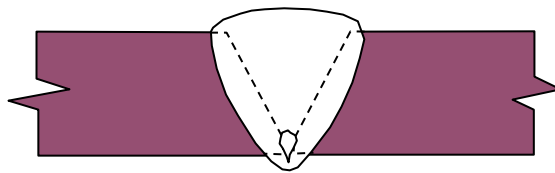
Lack of interpass fusion



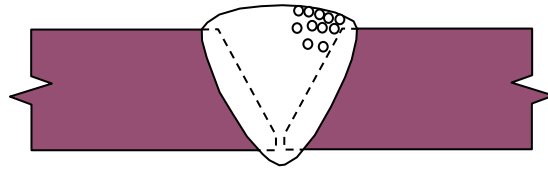
Lack of side wall fusion



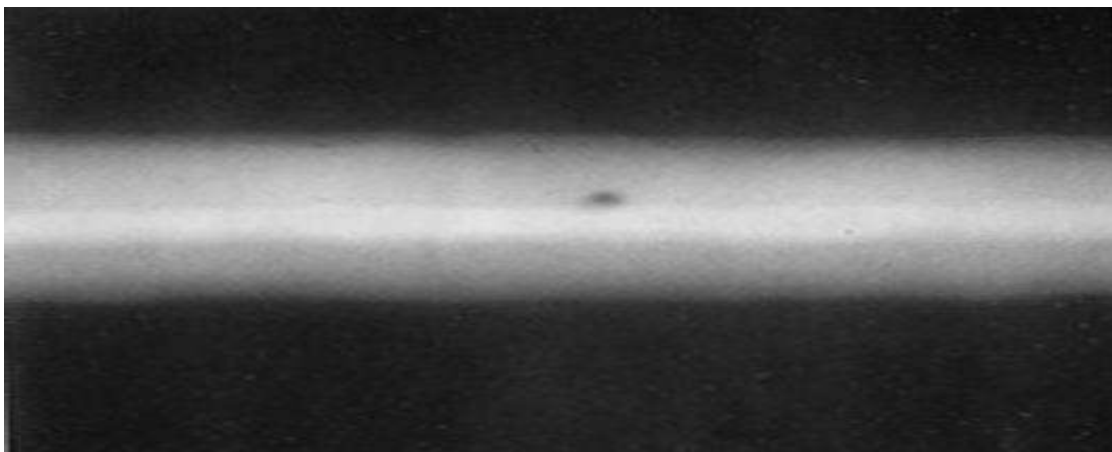
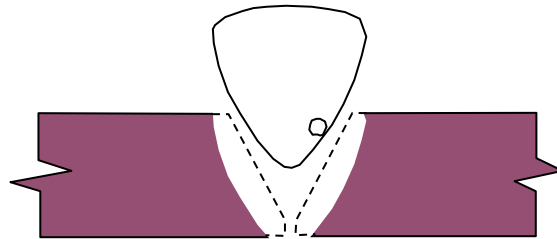
Root pass aligned porosity



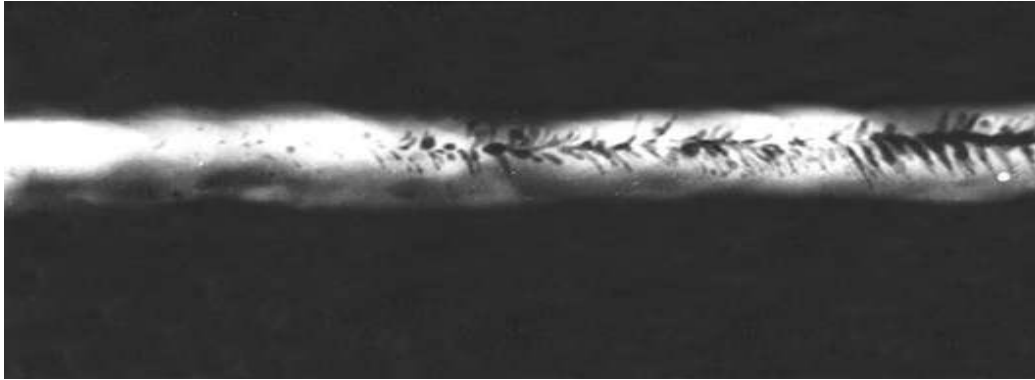
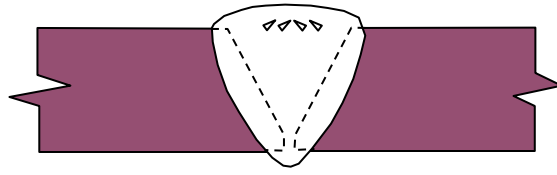
Porosity open to the surface



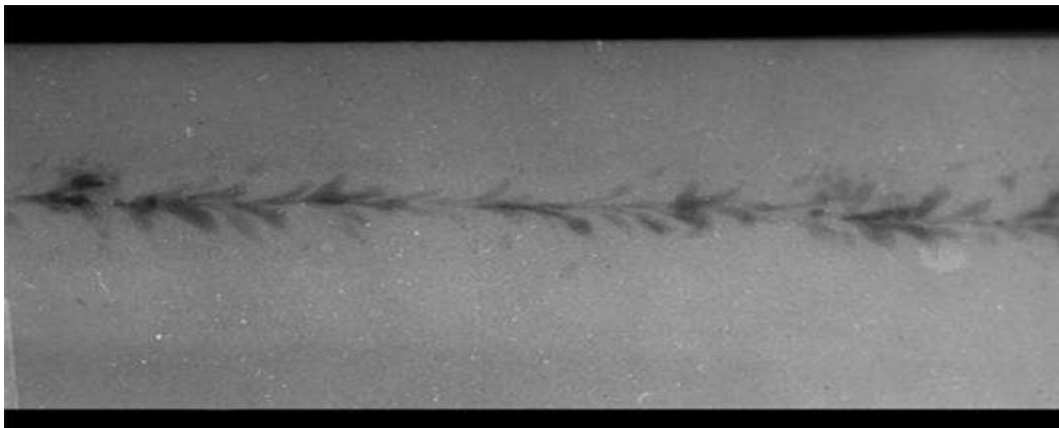
Single gas pore



Herring bone porosity



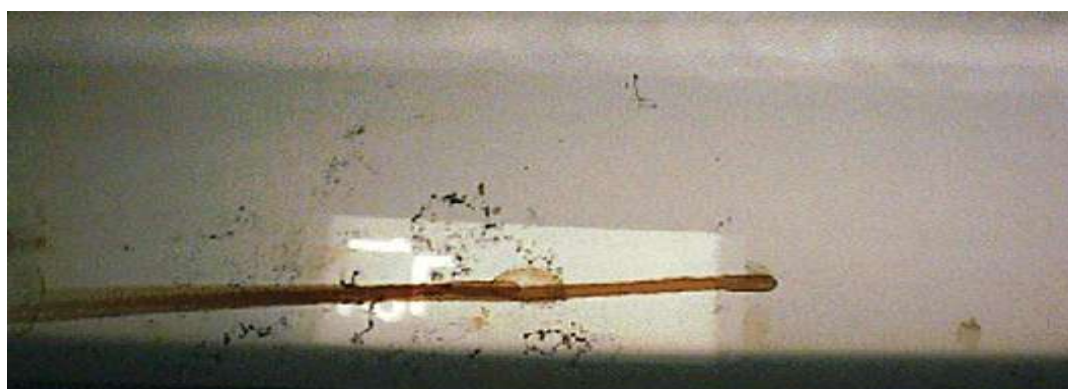
Herring bone porosity



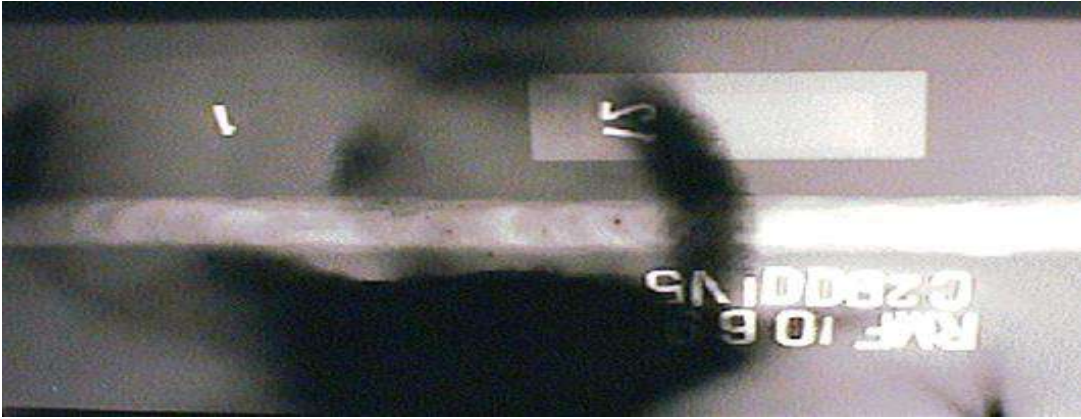
Film Scratches



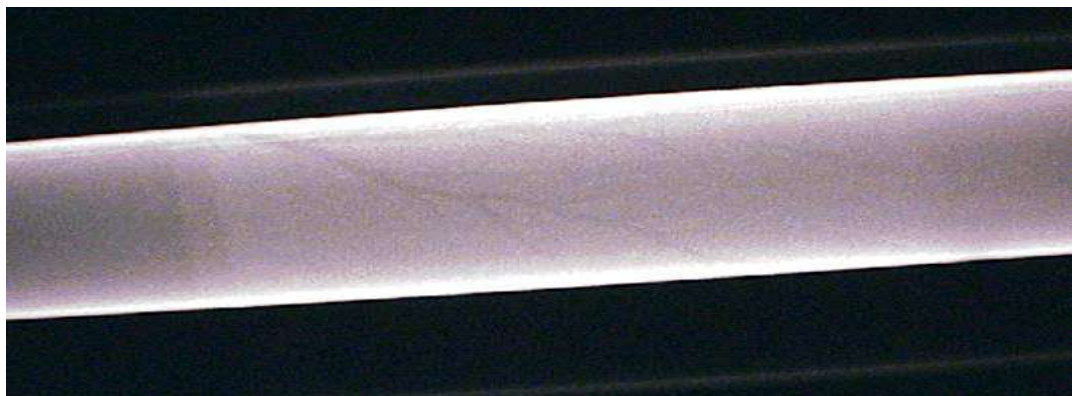
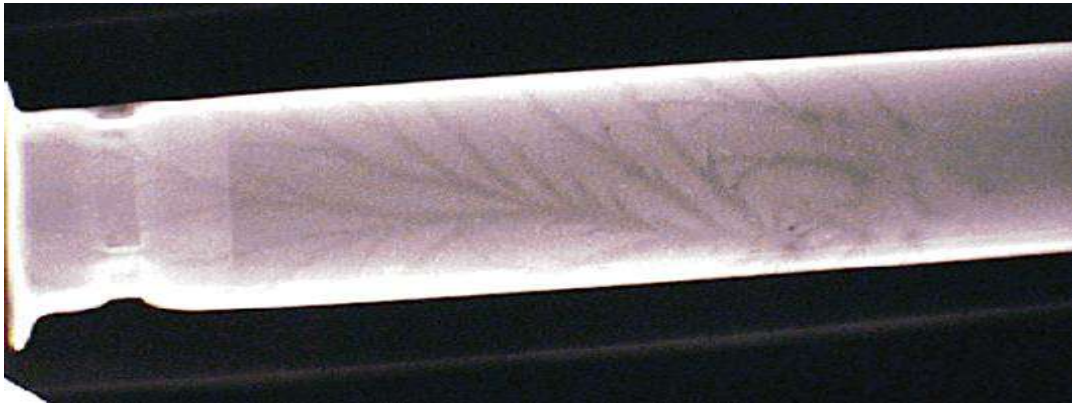
Chemical Marks



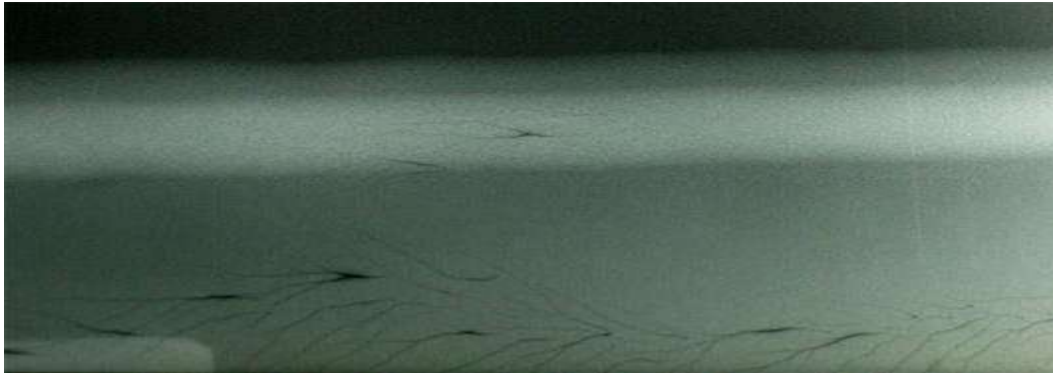
Light Leaks



Static Discharge



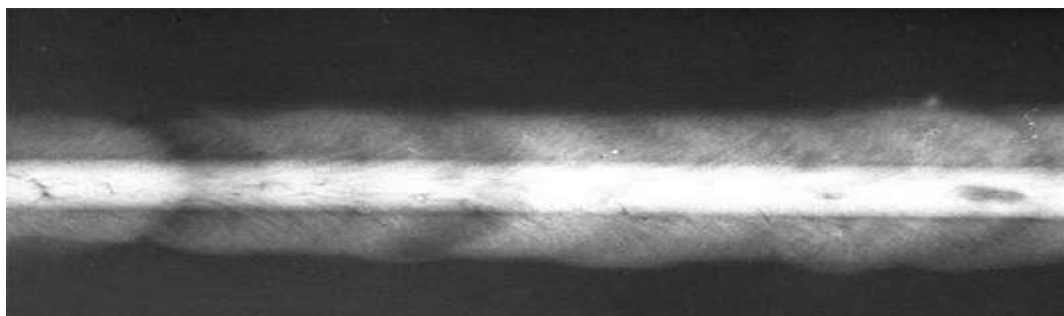
Static Discharge



Reticulation



Diffraction Mottle



Dust, Lint, Grime Marks



Water Marks



Crimping Marks

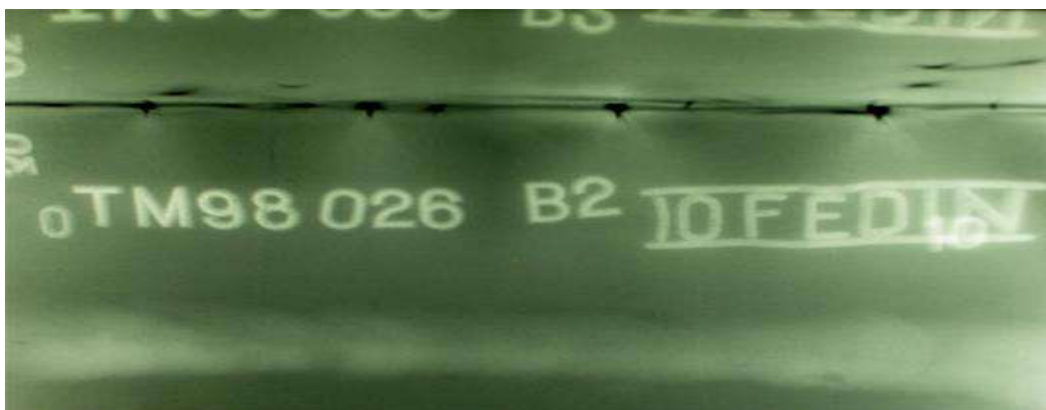


Before Exposure

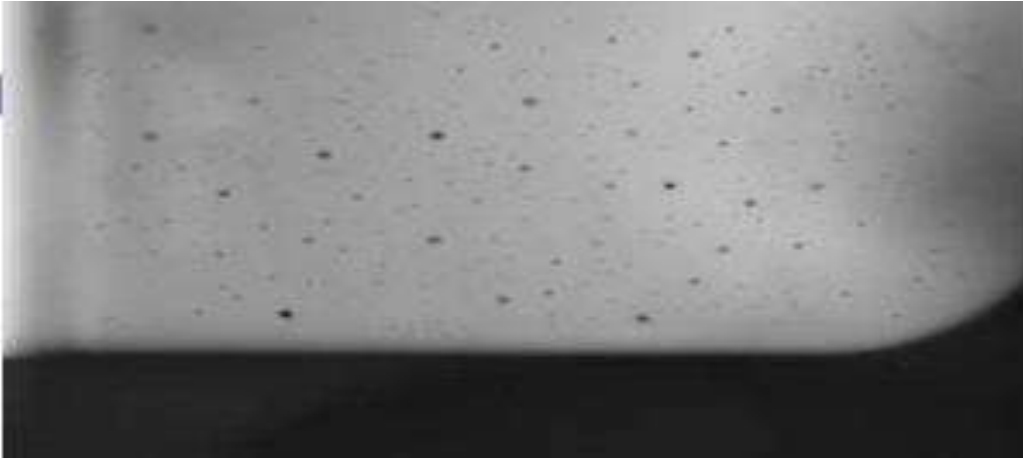


After Exposure

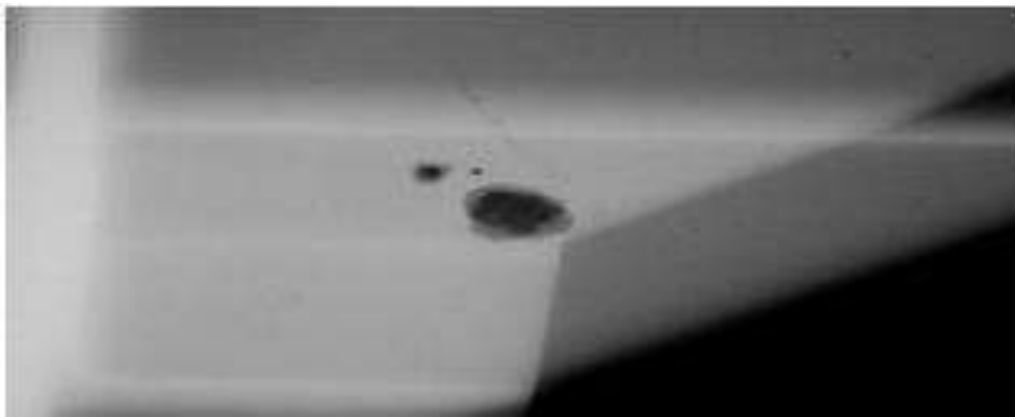
Other Artifacts



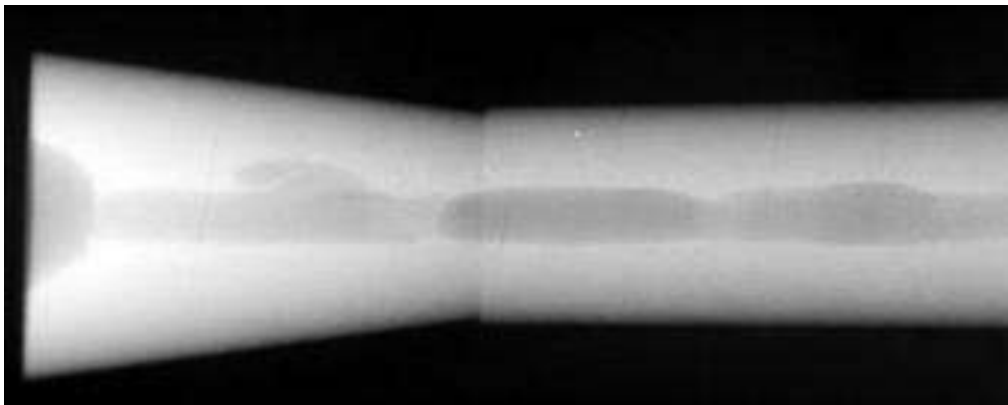
Gas porosity or blow holes



Sand inclusions and dross



Cavity shrinkage



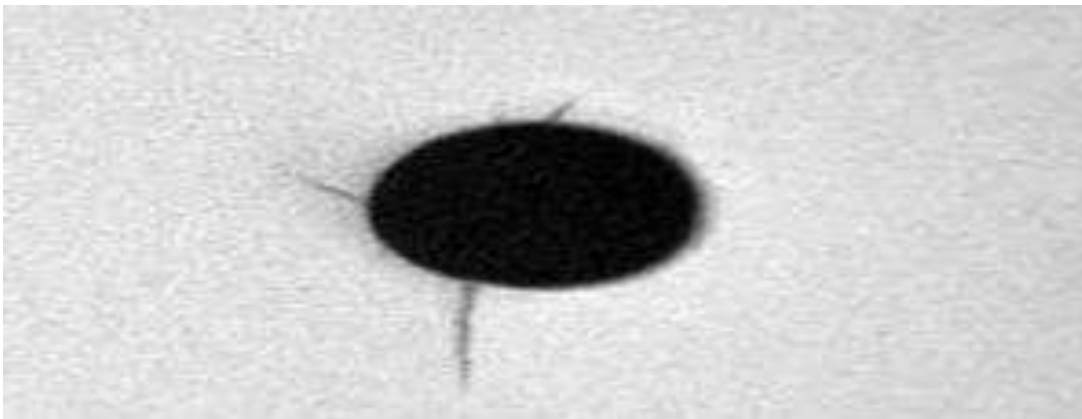
Dendritic shrinkage & Filamentary



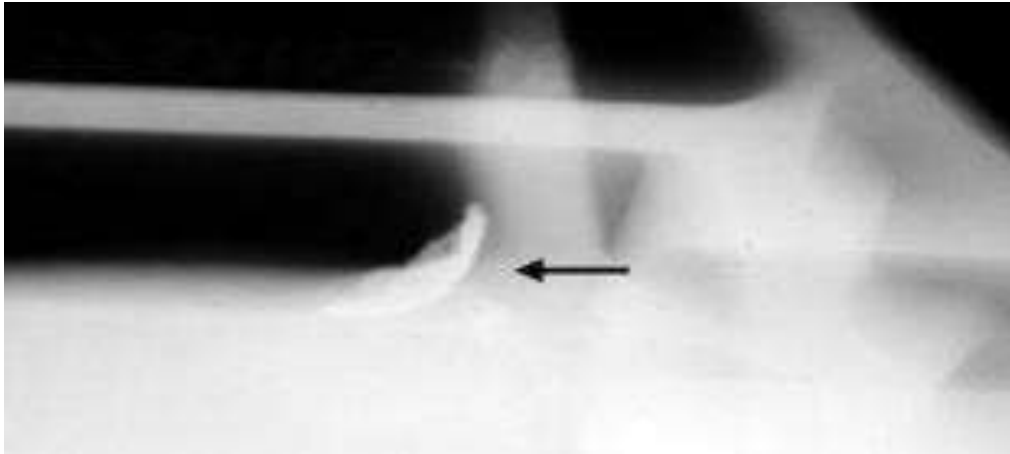
Sponge shrinkage



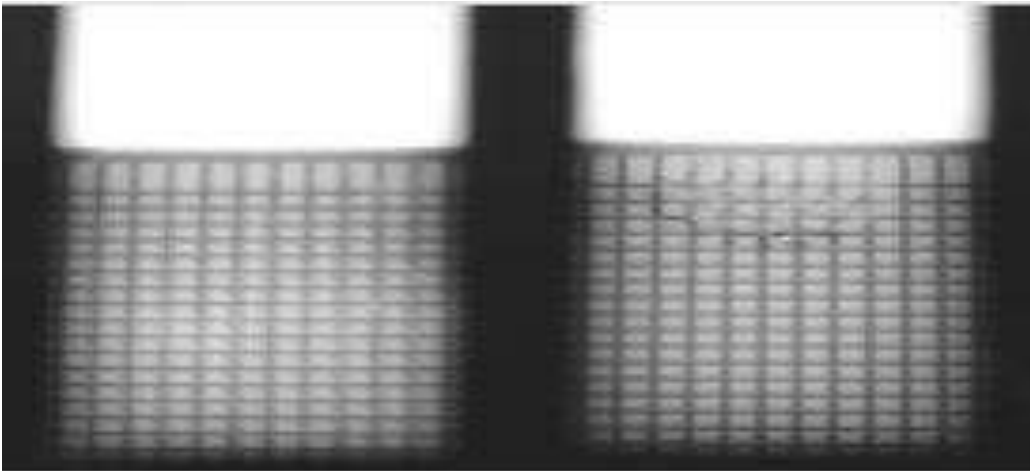
Cracks & Cold shuts



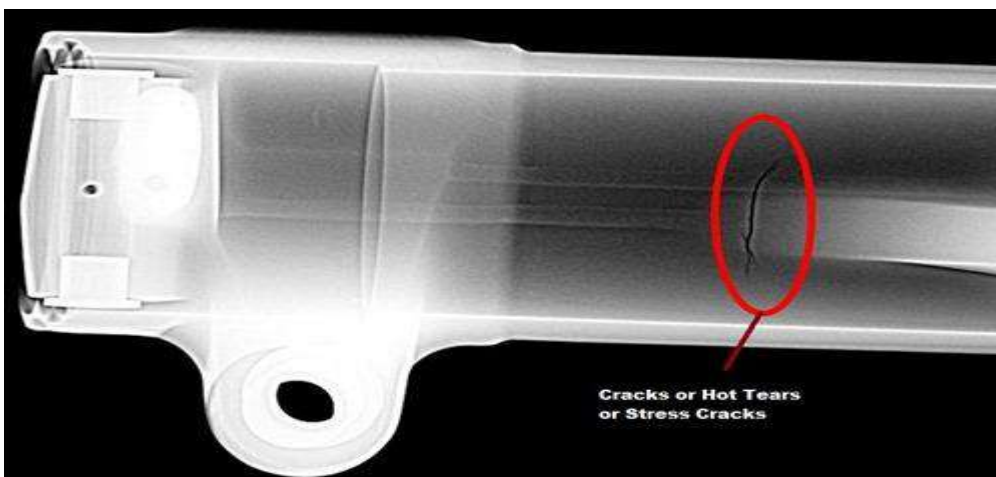
inclusions



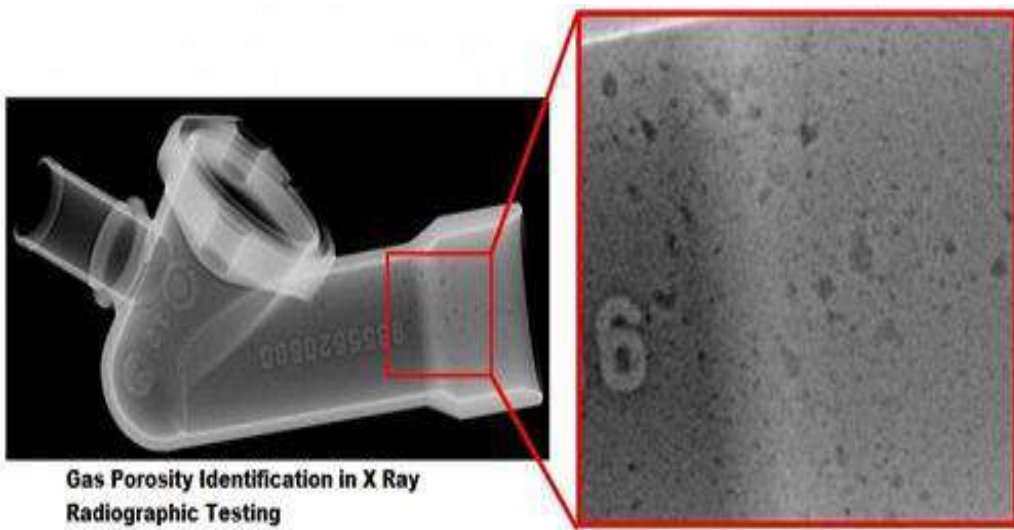
Core shift



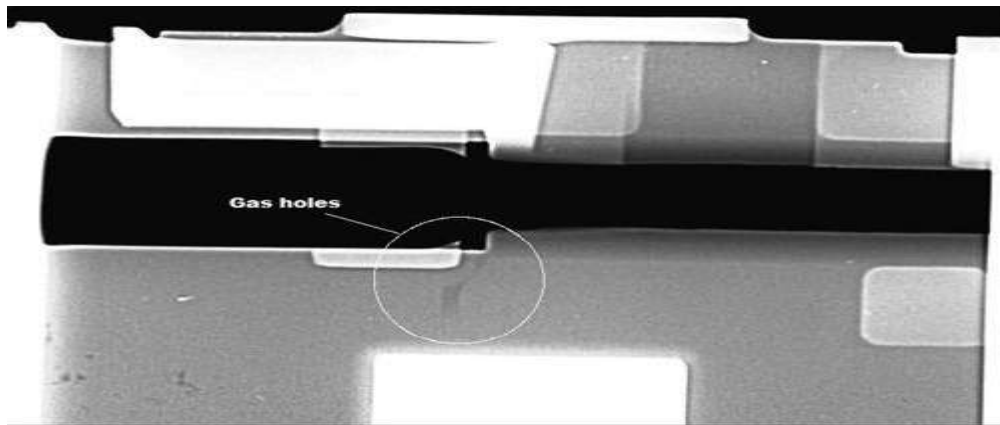
Cracks or Hot Tears or Stress Cracks



Gas porosity



Gas holes



Cold Shut

